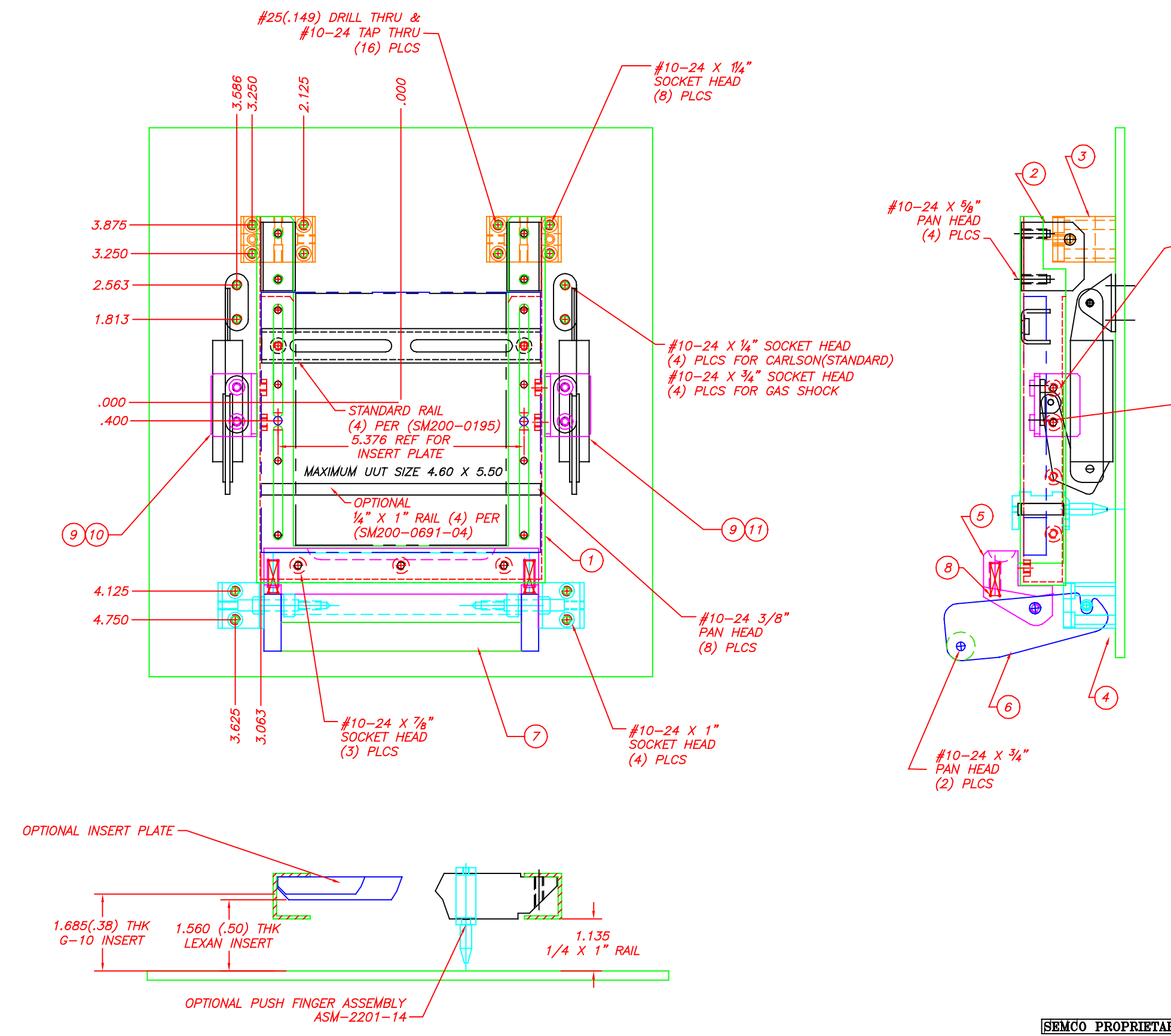


ITEM	PART NUMBER	DESCRIPTION	QTY
1	SM200-0371	FRAME, VOC-102 DW SHORT	1
2	SM200-0054	BLOCK, PIVOT OVERCLAMP	2
3	SM200-0031-02	BLOCK, HINGE .344 C'BORE	2
4	SM200-0032-02	BLOCK, LATCH .344 C'BORE	2
5	SM200-0028	BLOCK, PIVOT LATCH	1
6	SM200-0029	LATCH, CAPTIVATING DELRIN	2
7	SM200-0033	HANDLE	1
8	P0003	SPRING, LATCH	2
9	SM200-0435	BRACKET, CARLSON MOUNT	2
10	SMP-0020	CARLSON HINGE LEFT	1
11	SMP-0021	CARLSON SPRING RIGHT	1

D  
C  
B  
A



**ORDERING INSTRUCTIONS**

RAIL OPTION	5	6	7	11	12	13	14	15
ASM-2001-								
NO RAIL	F							
STANDARD RAIL	S							
1/4 X 1 SOLID RAIL	R							
G-10 INSERT	G							
ESD G-10 INSERT	G	E						
LEXAN INSERT	L							
ESD LEXAN INSERT	L	E						

OPTION CODE

A= GAS SHOCKS  
W=MICROSWITCH  
R1=.25 RISER BLOCKS  
R3=.50 RISER BLOCKS  
R5=.75 RISER BLOCKS  
R7=1.00 RISER BLOCKS

QTY	ASSEMBLY NUMBER	ECN	REV.	DATE	REVISION	BY	DATE	APVD
				11/26/01				

SEMCO PROPRIETARY

SCALE 1X

DWG NO ASM-2107

SHEET 1 OF 1