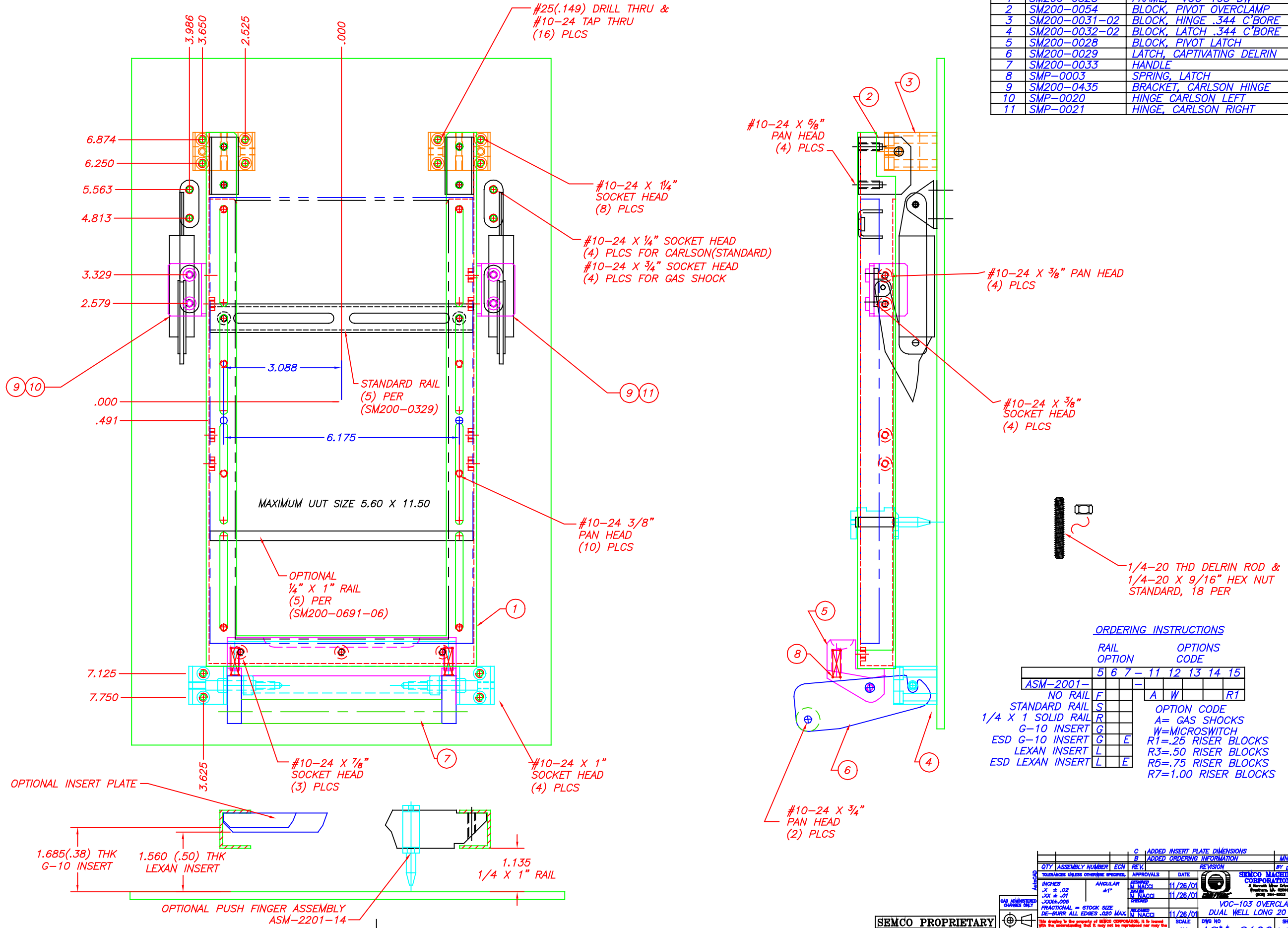


ITEM	PART NUMBER	DESCRIPTION	QTY
1	SM200-0328	FRAME, VOC-103 DW	1
2	SM200-0054	BLOCK, PIVOT OVERCLAMP	2
3	SM200-0031-02	BLOCK, HINGE .344 C'BORE	2
4	SM200-0032-02	BLOCK, LATCH .344 C'BORE	2
5	SM200-0028	BLOCK, PIVOT LATCH	1
6	SM200-0029	LATCH, CAPTIVATING DELRIN	2
7	SM200-0033	HANDLE	1
8	SMP-0003	SPRING, LATCH	2
9	SM200-0435	BRACKET, CARLSON HINGE	2
10	SMP-0020	HINGE, CARLSON LEFT	1
11	SMP-0021	HINGE, CARLSON RIGHT	1



ORDERING INSTRUCTIONS

RAIL OPTION	5	6	7	11	12	13	14	15
ASM-2001-								
NO RAIL	F							
STANDARD RAIL	S							
1/4 X 1 SOLID RAIL	R							
G-10 INSERT	G							
ESD G-10 INSERT	G	E						
LEXAN INSERT	L							
ESD LEXAN INSERT	L	E						

OPTION CODE

- A= GAS SHOCKS
- W=MICROSWITCH
- R1=.25 RISER BLOCKS
- R3=.50 RISER BLOCKS
- R5=.75 RISER BLOCKS
- R7=1.00 RISER BLOCKS

SEMCO PROPRIETARY

QTY	ASSEMBLY NUMBER	ECN	REV	DATE	REVISION	MN	BY DATE	APVD
				11/26/01				
				11/26/01				
				11/26/01				

INCHES: .0005 FRACTIONAL = STOCK SIZE
 TOLERANCES UNLESS OTHERWISE SPECIFIED:
 ANGULAR ±1°
 DECIMAL ALL EDGES .025 MAX.
 FRACTIONAL ALL EDGES .025 MAX.
 DECIMAL ALL EDGES .025 MAX.

APPROVALS: [Signature] DATE: 11/26/01
 [Signature] DATE: 11/26/01

SEMCO MACHINERY CORPORATION
 4 South West 24th Avenue, Ft. Lauderdale, FL 33309
 (954) 561-1000

VOC-103 OVERCLAMP
 DUAL WELL LONG 20 X 24

SCALE: 1X
 SHEET 1 OF 1