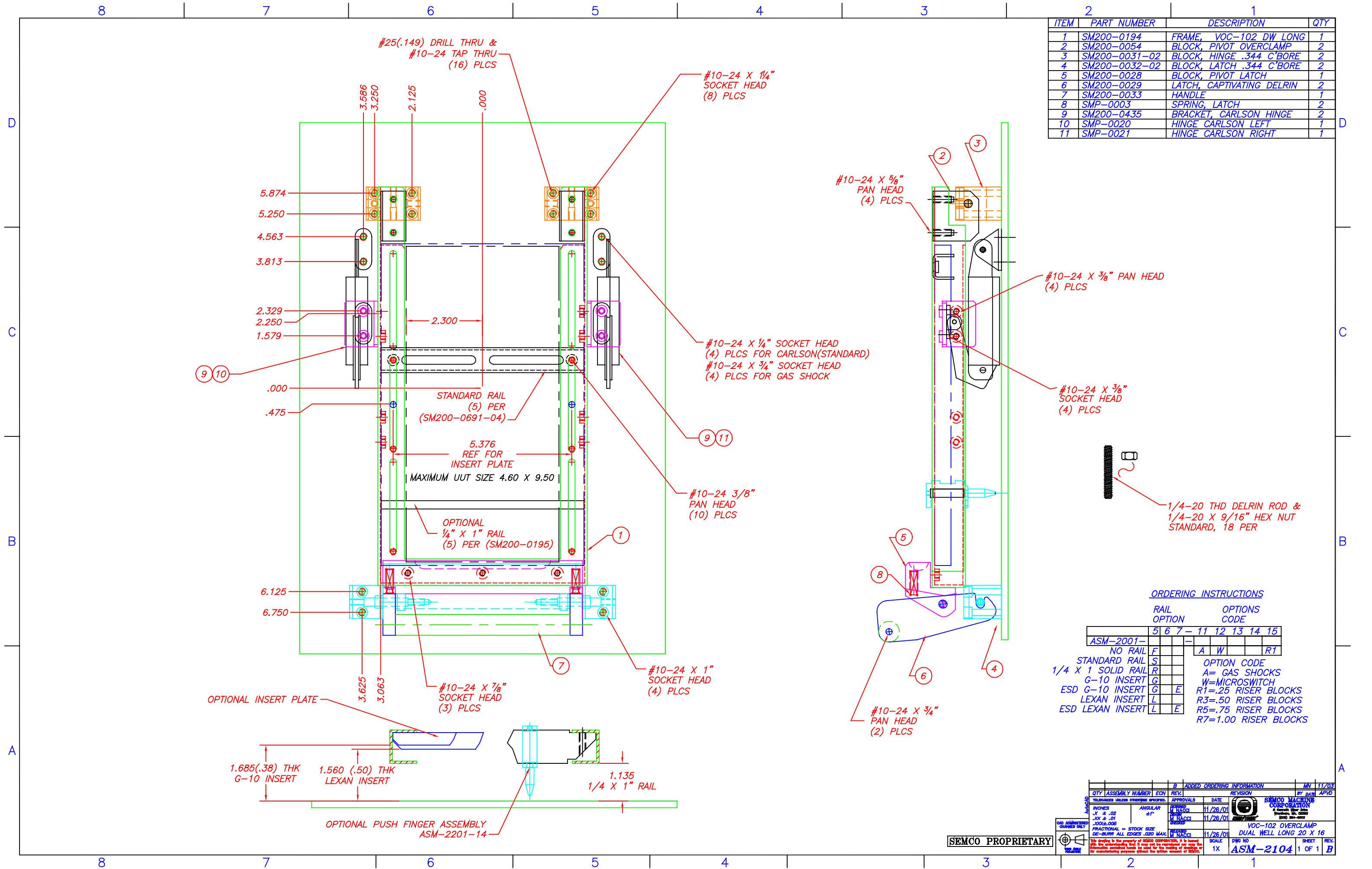


| ITEM | PART NUMBER | DESCRIPTION | QTY |
|------|---------------|---------------------------|-----|
| 1 | SM200-0194 | FRAME, VOC-102 DW LONG | 1 |
| 2 | SM200-0054 | BLOCK, PIVOT OVERCLAMP | 2 |
| 3 | SM200-0031-02 | BLOCK, HINGE .344 C'BORE | 2 |
| 4 | SM200-0032-02 | BLOCK, LATCH .344 C'BORE | 2 |
| 5 | SM200-0028 | BLOCK, PIVOT LATCH | 1 |
| 6 | SM200-0029 | LATCH, CAPTIVATING DELRIN | 2 |
| 7 | SM200-0033 | HANDLE | 1 |
| 8 | SMP-0003 | SPRING, LATCH | 2 |
| 9 | SM200-0435 | BRACKET, CARLSON HINGE | 2 |
| 10 | SMP-0020 | HINGE CARLSON LEFT | 1 |
| 11 | SMP-0021 | HINGE CARLSON RIGHT | 1 |



ORDERING INSTRUCTIONS

| RAIL OPTION | OPTIONS CODE | | | | |
|--------------------|--------------|---|---|----|-------------|
| | 5 | 6 | 7 | 11 | 12 13 14 15 |
| ASM-2001- | | | | | |
| NO RAIL | F | | | | A W R1 |
| STANDARD RAIL | S | | | | |
| 1/4 X 1 SOLID RAIL | R | | | | |
| G-10 INSERT | G | | | | |
| ESD G-10 INSERT | G | E | | | |
| LEXAN INSERT | L | | | | |
| ESD LEXAN INSERT | L | E | | | |

OPTION CODE
A= GAS SHOCKS
W=MICROSWITCH
R1=.25 RISER BLOCKS
R3=.50 RISER BLOCKS
R5=.75 RISER BLOCKS
R7=1.00 RISER BLOCKS

| QTY | ASSEMBLY NUMBER | ECN | REV. | DATE | BY | DATE | APVD |
|-----|-----------------|-----|------|----------|----|------|------|
| | | | | 11/28/01 | | | |

APPROVALS

| | | |
|----------|------|----|
| DESIGNED | DATE | BY |
| 11/28/01 | | |
| CHECKED | DATE | BY |
| 11/28/01 | | |

ADDED ORDERING INFORMATION

| | |
|--------|----------|
| SCALE | 1X |
| DWG NO | ASM-2104 |
| SHEET | 1 OF 1 |

SEMCO PROPRIETARY