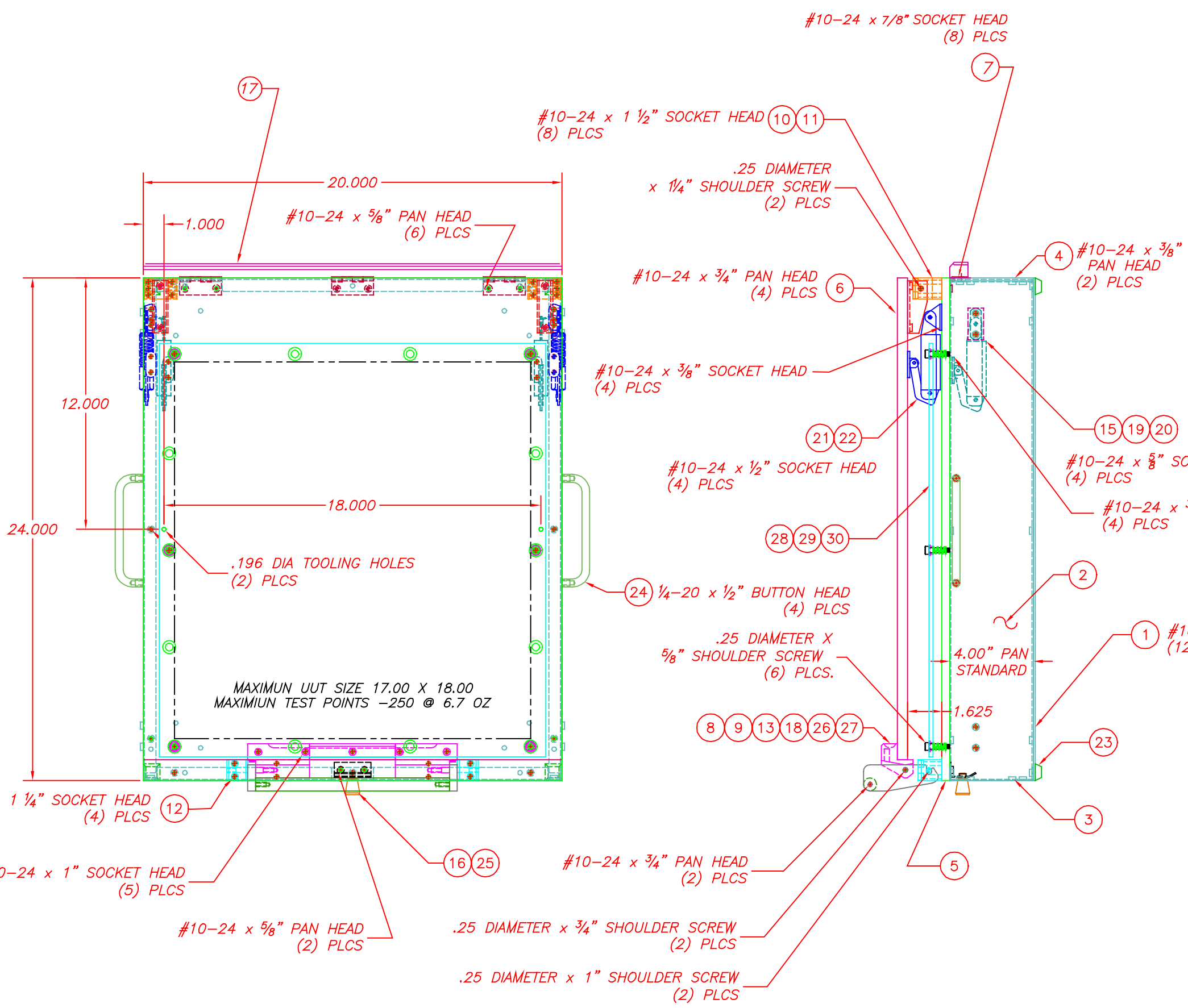


8 7 6 5 4 3 2 1

D  
C  
B  
A

ITEM	PART NUMBER	DESCRIPTION	QTY
1	SM400-0079	PANEL, BOTTOM	1
2	SM400-0080	PANEL, SIDE	2
3	SM400-0081-01	PANEL, FRONT MOD	1
4	SM400-0082	PANEL, REAR	1
5	SM400-0083-02	PLATE, PROBE	1
6	SM400-0084	COVER, PLEXI	1
7	SM200-0027	HINGE	3
8	SM200-0207	BLOCK, PIVOT LATCH LH	1
9	SM200-0029	LATCH, CAPTIVATING	2
10	SM200-0030	ARM, PIVOT	2
11	SM200-0031-01	BLOCK, HINGE	2
12	SM200-0032-01	BLOCK, LATCH PIN	2
13	SM200-0208-01	HANDLE	1
14	SM200-0204-01	PIN, PUSH w/1/4-20 NUTS	30
15	SM200-0209	BLOCK, SPACER	2
16	SM200-0214	LATCH	1
17	SM200-0665	STRAP, STIFFENER	1
18	P0003	SPRING (LC-032C-12MW)	2
19	P0012	HINGE, CARLSON 702 LEFT	1
20	P0013	HINGE, CARLSON 702 RIGHT	1
21	P0026	HINGE, CARLSON 703 LEFT	1
22	P0027	HINGE, CARLSON 703 RIGHT	1
23	P0034	BUMPON	4
24	P0044	HANDLE, SIDE	2
25	P0045	SPRING, PLUNGER	1
26	SM200-0207-01	BLOCK, LATCH PIVOT RH	1
27	SM200-0207-02	GRIP, HANDLE EXTENDER	1
28	P0056	SPRING	14
29	SM200-0526	BUSHING, STEP	6
30	SM200-2647	PLATE, STRIPPER	1



MAXIMUM UUT SIZE 17.00 X 18.00  
MAXIMUM TEST POINTS -250 @ 6.7 OZ

ORDERING INSTRUCTIONS

KIT, NO LATCH, NO OPTIONS, 4"	PAN SIZES				OPTIONS CODE					
	5	6	7	8	9	10	11	12	13	14
ASM-1007-										
BARE BOARD & PAN, NO UHA	B				4	0	P		A	W
BARE BD & PAN W/LATCH NO UHA	B	X								
ESD BARE BD/PAN W/LATCH NO UHA	B	X	E		8	0	P			
UPPER HEAD ASSEMBLY	U									
UPPER HEAD ASSEMBLY ESD	U		E							
PAN ASSEMBLY ONLY NO LATCH	P									
PAN ASSEMBLY ONLY W/LATCH	P	X								
COMPLETE KIT W/LATCH	X									
KIT W/LATCH ESD PLATES	X		E							
KIT W/LATCH & STRIPPER PLATE	X	T								
KIT W/LATCH/STRIPPER W/ESD PLATES	X	T	E							

OPTION CODE  
A= GAS SHOCKS  
W=MICROSWITCH  
R1=.25 RISER BLOCKS  
R3=.50 RISER BLOCKS  
R5=.75 RISER BLOCKS  
R7=1.00 RISER BLOCKS

QTY	ASSEMBLY NUMBER	ECN	REV.	DATE	REVISION	BY	DATE	APVD
			C	8/22/95	UPDATED DWG.	MN	11/04	
			M	8/22/95				
			D	8/20/01				
			M	8/22/95				

**SEMCO MACHINE CORPORATION**  
 3 Kenneth Miller Drive  
 Westfield, MA 01095  
 (408) 304-8303

**MT-104 TEST FIXTURE**  
 W/ STRIPPER PLATE

SCALE: 2:5  
 DWG NO: ASM-1007-XT  
 SHEET: 1 of 1  
 REV: C

SEMCO PROPRIETARY

8 7 6 5 4 3 2 1