

ORDERING INSTRUCTIONS

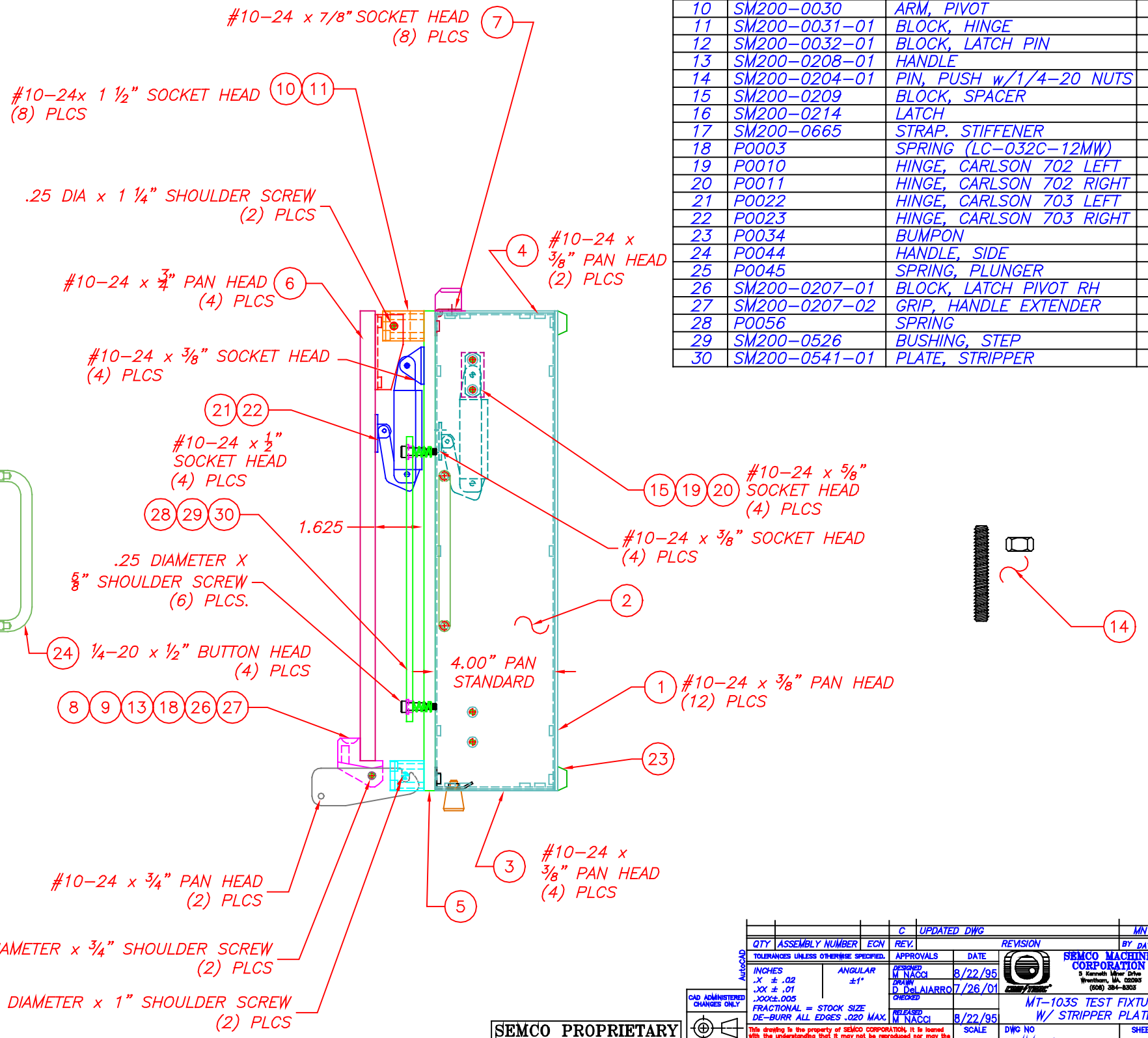
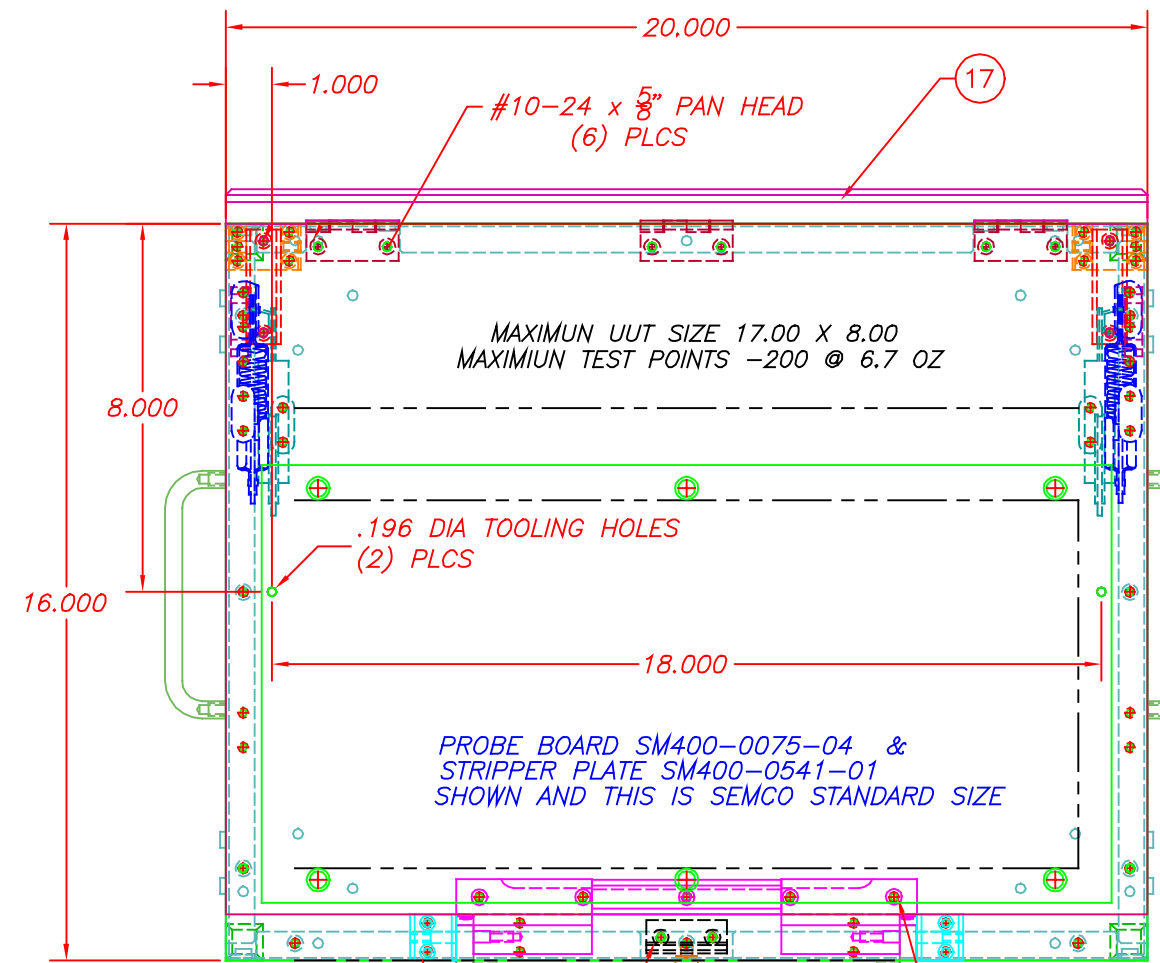
PAN SIZES	OPTIONS CODE			
	5	6	7	8
ASM-1006-				
B				
B X				
B X E				
U				
U E				
P				
P X				
X				
X E				
X T				
X T E				

KIT, NO LATCH, NO OPTIONS, 4"
 BARE BOARD & PAN, NO UHA
 BARE BD & PAN W/LATCH NO UHA
 ESD BARE BD/PAN W/LATCH NO UHA
 UPPER HEAD ASSEMBLY
 UPPER HEAD ASSEMBLY ESD
 PAN ASSEMBLY ONLY NO LATCH
 PAN ASSEMBLY ONLY W/LATCH
 COMPLETE KIT W/LATCH
 KIT W/LATCH ESD PLATES
 KIT W/LATCH & STRIPPER PLATE
 KIT W/LATCH/STRIPPER W/ESD PLATES

OPTION CODE
 A= GAS SHOCKS
 W=MICROSWITCH
 R1=.25 RISER BLOCKS
 R3=.50 RISER BLOCKS
 R5=.75 RISER BLOCKS
 R7=1.00 RISER BLOCKS

** ITEM-5	** ITEM-27	MAX. UUT	
SM400-0075-04	SM400-0541-01	17.00 x 8.00	STANDARD SIZE
SM400-0075-05	SM400-1672	17.00 x 6.00	
SM400-0075-06	SM400-1671	17.00 x 4.00	

ITEM	PART NUMBER	DESCRIPTION	QTY
1	SM400-0046	PANEL, BOTTOM	1
2	SM400-0038	PANEL, SIDE	2
3	SM400-0081-01	PANEL, FRONT MOD	1
4	SM400-0082	PANEL, REAR	1
5	SM400-0075-04	PLATE, PROBE	1
6	SM400-0018	COVER, PLEXI	1
7	SM200-0027	HINGE	3
8	SM200-0207	BLOCK, PIVOT LATCH LH	1
9	SM200-0029	LATCH, CAPTIVATING	2
10	SM200-0030	ARM, PIVOT	2
11	SM200-0031-01	BLOCK, HINGE	2
12	SM200-0032-01	BLOCK, LATCH PIN	2
13	SM200-0208-01	HANDLE	1
14	SM200-0204-01	PIN, PUSH w/1/4-20 NUTS	24
15	SM200-0209	BLOCK, SPACER	2
16	SM200-0214	LATCH	1
17	SM200-0665	STRAP, STIFFENER	1
18	P0003	SPRING (LC-032C-12MW)	2
19	P0010	HINGE, CARLSON 702 LEFT	1
20	P0011	HINGE, CARLSON 702 RIGHT	1
21	P0022	HINGE, CARLSON 703 LEFT	1
22	P0023	HINGE, CARLSON 703 RIGHT	1
23	P0034	BUMPON	4
24	P0044	HANDLE, SIDE	2
25	P0045	SPRING, PLUNGER	1
26	SM200-0207-01	BLOCK, LATCH PIVOT RH	1
27	SM200-0207-02	GRIP, HANDLE EXTENDER	1
28	P0056	SPRING	6
29	SM200-0526	BUSHING, STEP	6
30	SM200-0541-01	PLATE, STRIPPER	1



#10-24 x 1 1/4" SOCKET HEAD (4) PLCS (12)
 #10-24 x 5/8" PAN HEAD (2) PLCS (16, 25)
 #10-24 x 1" SOCKET HEAD (5) PLCS (17)

.25 DIAMETER x 3/4" SHOULDER SCREW (2) PLCS
 .25 DIAMETER x 1" SHOULDER SCREW (2) PLCS

QTY	ASSEMBLY NUMBER	ECN	REV.	DATE	REVISION	BY	DATE	APVD

TOLERANCES UNLESS OTHERWISE SPECIFIED:
 INCHES: .X ± .02, .XX ± .01, .XXX ± .005
 ANGULAR: ±1°
 FRACTIONAL = STOCK SIZE
 DE-BURR ALL EDGES .020 MAX.
 SCALE: 1:2
 DWG NO: ASM-1006-XT
 SHEET: 1 of 1
 REV. C

SEMCO PROPRIETARY