

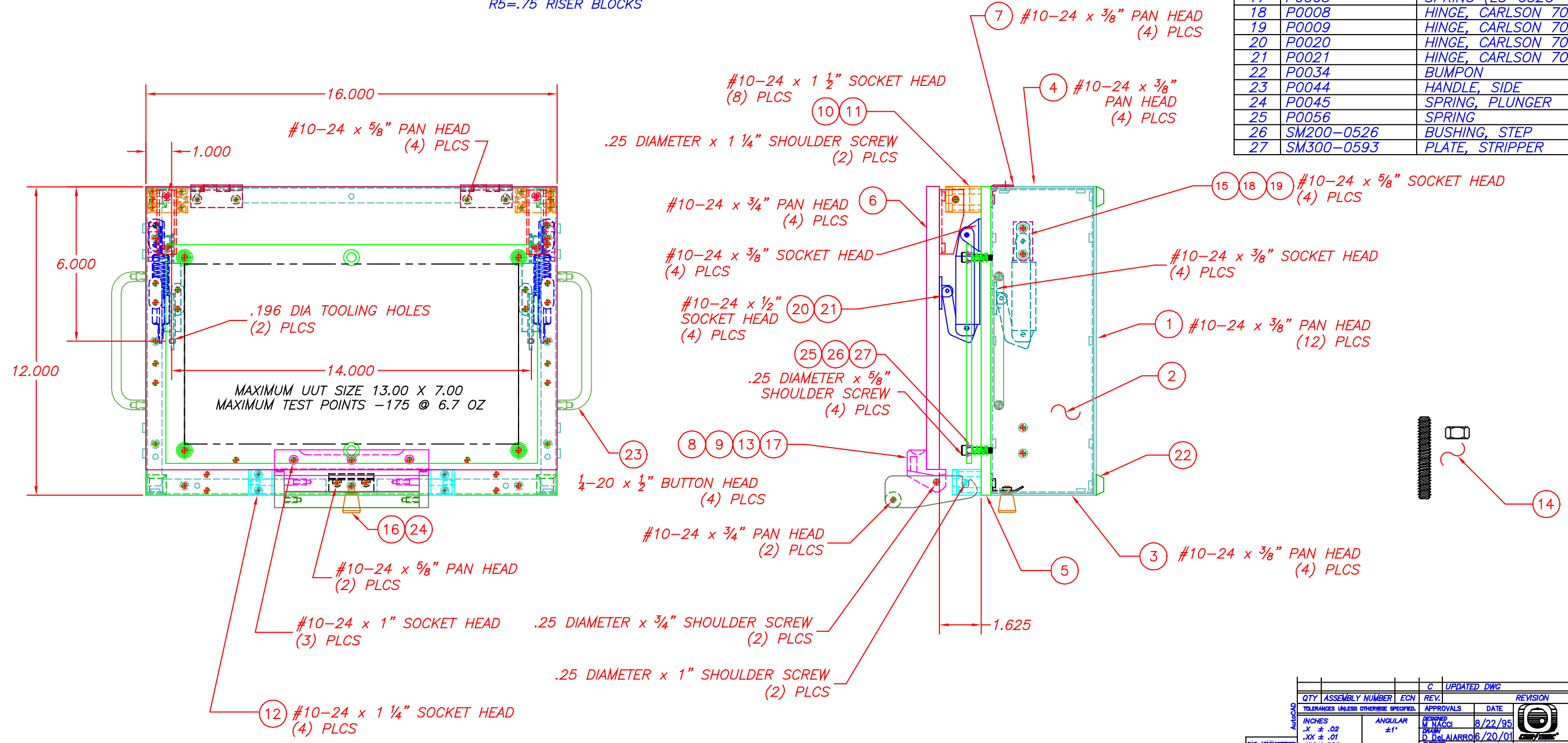
ORDERING INSTRUCTIONS

	PAN SIZES				OPTIONS CODE							
	5	6	7	8	9	10	11	12	13	14		
ASM-1004-									A	W	H	R1
KIT, NO LATCH, NO OPTIONS, 4" BARE BOARD & PAN, NO UHA	B				2	5	P					
BARE BD & PAN W/LATCH NO UHA	B	X			4	0	P					
ESD BARE BD/PAN W/LATCH NO UHA	B	X	E		6	0	P					
UPPER HEAD ASSEMBLY	U				S	L	P					
UPPER HEAD ASSEMBLY ESD	U		E									
PAN ASSEMBLY ONLY NO LATCH	P											
PAN ASSEMBLY ONLY W/LATCH	P	X										
COMPLETE KIT W/LATCH	X											
KIT W/LATCH ESD PLATES	X		E									
KIT W/LATCH & STRIPPER PLATE	X	T										
KIT W/LATCH/STRIPPER W/ESD PLATES	X	T	E									

OPTION CODE
 A= GAS SHOCKS
 W=MICROSWITCH
 H=EXTENDED HANDLE
 R1=.25 RISER BLOCKS
 R3=.50 RISER BLOCKS
 R5=.75 RISER BLOCKS

ITEM	PART NUMBER	DESCRIPTION	QTY
1	SM400-0037	PANEL, BOTTOM	1
2	SM400-0022	PANEL, SIDE	2
3	SM400-0048-01	PANEL, FRONT MOD	1
4	SM400-0049	PANEL, REAR	1
5	SM400-0072-02	PLATE, PROBE	1
6	SM400-0017	COVER, PLEXI	1
7	SM200-0027	HINGE	2
8	SM200-0028	BLOCK, PIVOT LATCH	1
9	SM200-0029	LATCH, CAPTIVATING	2
10	SM200-0030	ARM, PIVOT	2
11	SM200-0031-01	BLOCK, HINGE	2
12	SM200-0032-01	BLOCK, LATCH PIN	2
13	SM200-0033	HANDLE	1
14	SM200-0204-01	PIN, PUSH w/1/4-20 NUTS	18
15	SM200-0209	BLOCK, SPACER	2
16	SM200-0214	LATCH	1
17	P0003	SPRING (LC-032C-12MW)	2
18	P0008	HINGE, CARLSON 702 LEFT	1
19	P0009	HINGE, CARLSON 702 RIGHT	1
20	P0020	HINGE, CARLSON 703 LEFT	1
21	P0021	HINGE, CARLSON 703 RIGHT	1
22	P0034	BUMPON	4
23	P0044	HANDLE, SIDE	2
24	P0045	SPRING, PLUNGER	1
25	P0056	SPRING	6
26	SM200-0526	BUSHING, STEP	4
27	SM300-0593	PLATE, STRIPPER	1

D
C
B
A



QTY	ASSEMBLY NUMBER	ECN	REV.	DATE	REVISION	BY	DATE	APVD
			C		UPDATED DWG	MN	11/04	

TOLERANCES UNLESS OTHERWISE SPECIFIED:
 INCHES .X ± .02
 .XX ± .01
 .XXX ± .005
 FRACTIONAL = STOCK SIZE
 DE-BURR ALL EDGES .020 MAX.

APPROVALS
 DESIGNED: M NACCI 8/22/95
 DRAWN: D DeLAIARRO 6/20/01
 CHECKED: M NACCI 8/22/95
 RELEASED: M NACCI 8/22/95

SEMCO MACHINE CORPORATION
 5 Kenneth Miller Drive
 Westport, MA 02093
 (508) 384-8303

MT-102S TEST FIXTURE
 W/STRIPPER PLATE

SCALE: 1:2
 DWG NO: ASM-1004-XT
 SHEET: 1 of 1
 REV: C

SEMCO PROPRIETARY