

ORDERING INSTRUCTIONS

PAN SIZES
OPTIONS CODE

5	6	7	8	9	10	11	12	13	14
ASM-1002-			2	5	P	A	W		R1
	B		4	0	P				
	B	X							
	B	X	E						
	U		S	L	P				
	U	E							
	P								
	P	X							
	X								
	X	E							
	X	T							
	X	T	E						

KIT, NO LATCH, NO OPTIONS, 4" BARE BOARD & PAN, NO UHA
 BARE BD & PAN W/LATCH NO UHA
 ESD BARE BD/PAN W/LATCH NO UHA
 UPPER HEAD ASSEMBLY
 UPPER HEAD ASSEMBLY ESD
 PAN ASSEMBLY ONLY NO LATCH
 PAN ASSEMBLY ONLY W/LATCH
 COMPLETE KIT W/LATCH
 KIT W/LATCH ESD PLATES
 KIT W/LATCH & STRIPPER PLATE
 KIT W/LATCH/STRIPPER W/ESD PLATES

OPTION CODE
 A= GAS SHOCKS
 W=MICROSWITCH
 R1=.25 RISER BLOCKS
 R3=.50 RISER BLOCKS
 R5=.75 RISER BLOCKS
 R7=1.00 RISER BLOCKS

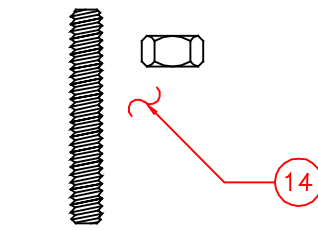
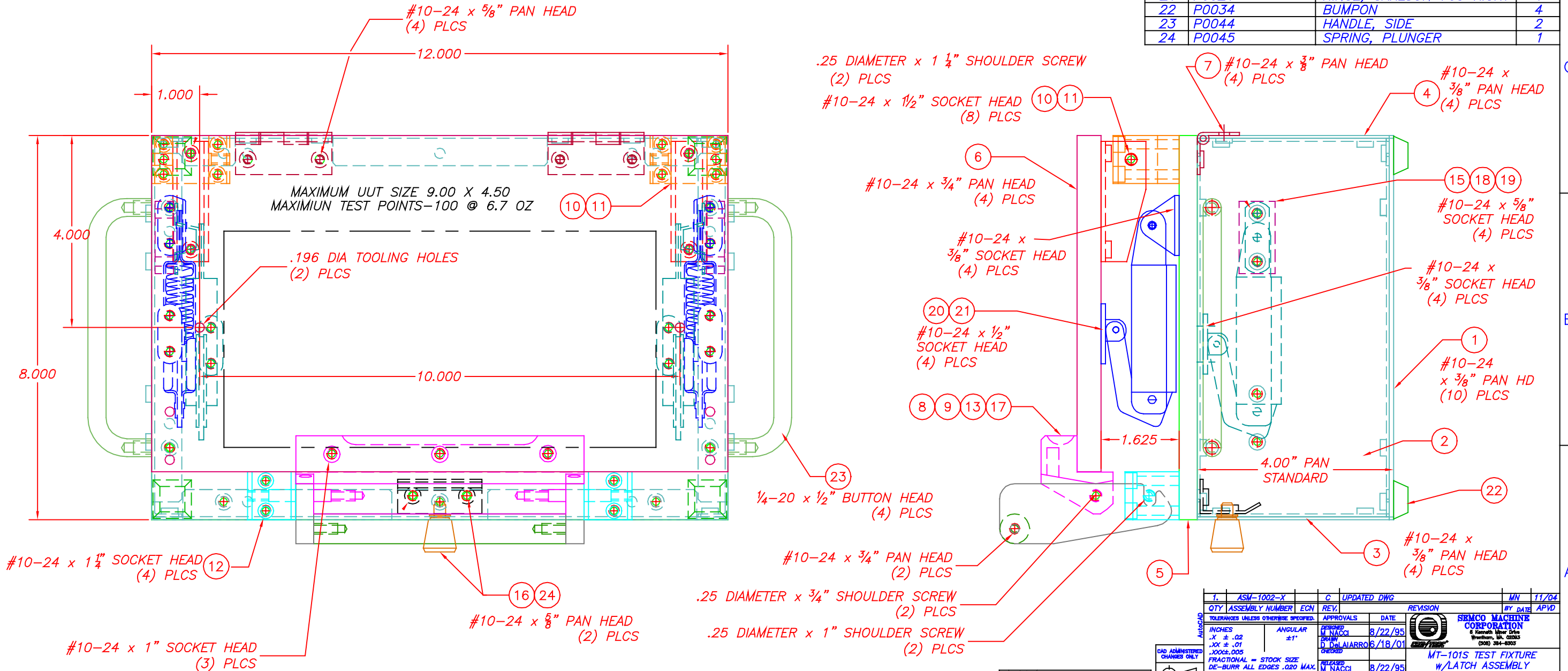
ITEM	PART NUMBER	DESCRIPTION	QTY
1	SM400-0021	PANEL, BOTTOM	1
2	SM400-0022-01	PANEL, SIDE	2
3	SM400-0039-01	PANEL, FRONT MOD	1
4	SM400-0040	PANEL, REAR	1
5	SM400-0012	PLATE, PROBE	1
6	SM400-0013	COVER, PLEXI	1
7	SM200-0027	HINGE	2
8	SM200-0028	BLOCK, PIVOT LATCH	1
9	SM200-0029	LATCH, CAPTIVATING	2
10	SM200-0030	ARM, PIVOT	2
11	SM200-0031-01	BLOCK, HINGE	2
12	SM200-0032-01	BLOCK, LATCH PIN	2
13	SM200-0033	HANDLE	1
14	SM200-0204-01	PIN, PUSH w/1/4-20 NUTS	14
15	SM200-0209	BLOCK, SPACER	2
16	SM200-0214	LATCH	1
17	P0003	SPRING (LC-032C-12MW)	2
18	P0006	HINGE, CARLSON 702 LEFT	1
19	P0007	HINGE, CARLSON 702 RIGHT	1
20	P0020	HINGE, CARLSON 703 LEFT	1
21	P0021	HINGE, CARLSON 703 RIGHT	1
22	P0034	BUMPON	4
23	P0044	HANDLE, SIDE	2
24	P0045	SPRING, PLUNGER	1

D

C

B

A



SEMCO PROPRIETARY

1	ASM-1002-X	C	UPDATED DWG	MN	11/04
QTY	ASSEMBLY NUMBER	ECN	REV.	REVISION	BY DATE
TOLERANCES UNLESS OTHERWISE SPECIFIED:					
INCHES	ANGULAR	APPROVALS			
.XX ± .02	±1°	DESIGNED	DATE	SEMCO MACHINE CORPORATION	
.XX ± .01		DRWING	8/22/95	8 Kenneth Miller Drive	
.0005, .005		CHECKED	6/18/01	Westborough, MA 01581	
FRACTIONAL = STOCK SIZE		RELEASED	8/22/95	(508) 394-8992	
DE-BURR ALL EDGES .020 MAX.		DATE	8/22/95	MT-101S TEST FIXTURE	
		SCALE	1:1	W/LATCH ASSEMBLY	
		DWG NO	ASM-1002-X	SHEET	REV.
				1 of 1	C