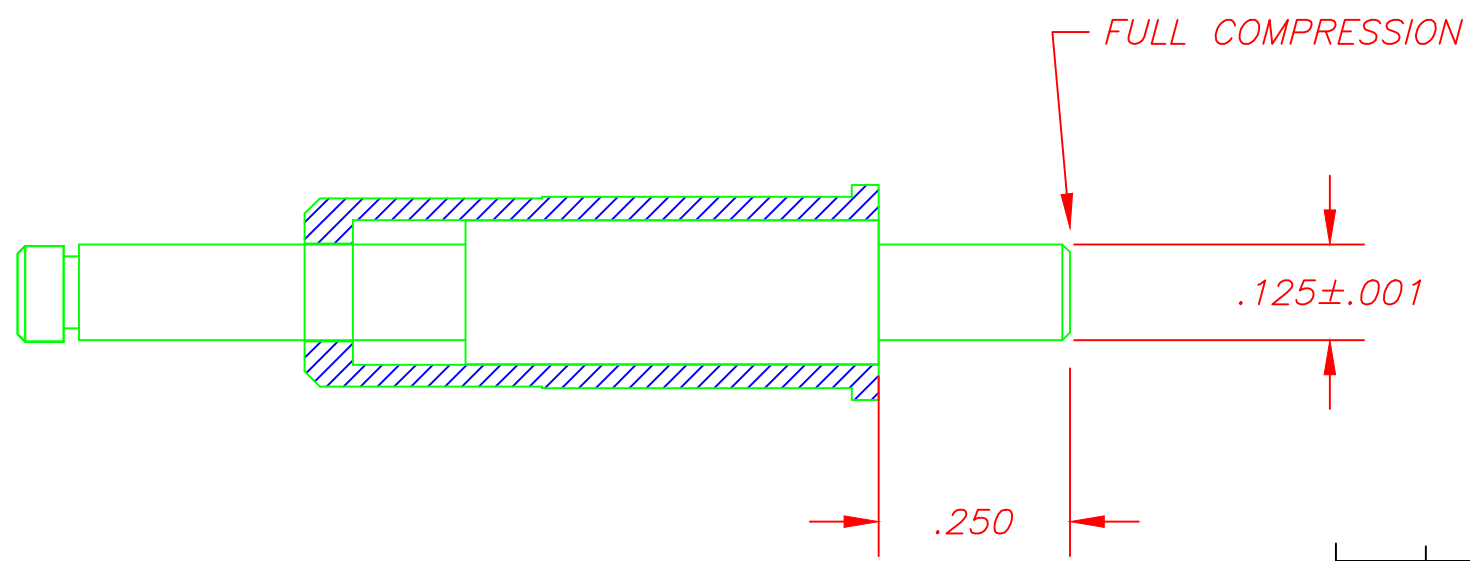
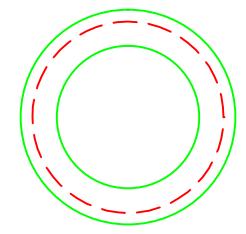
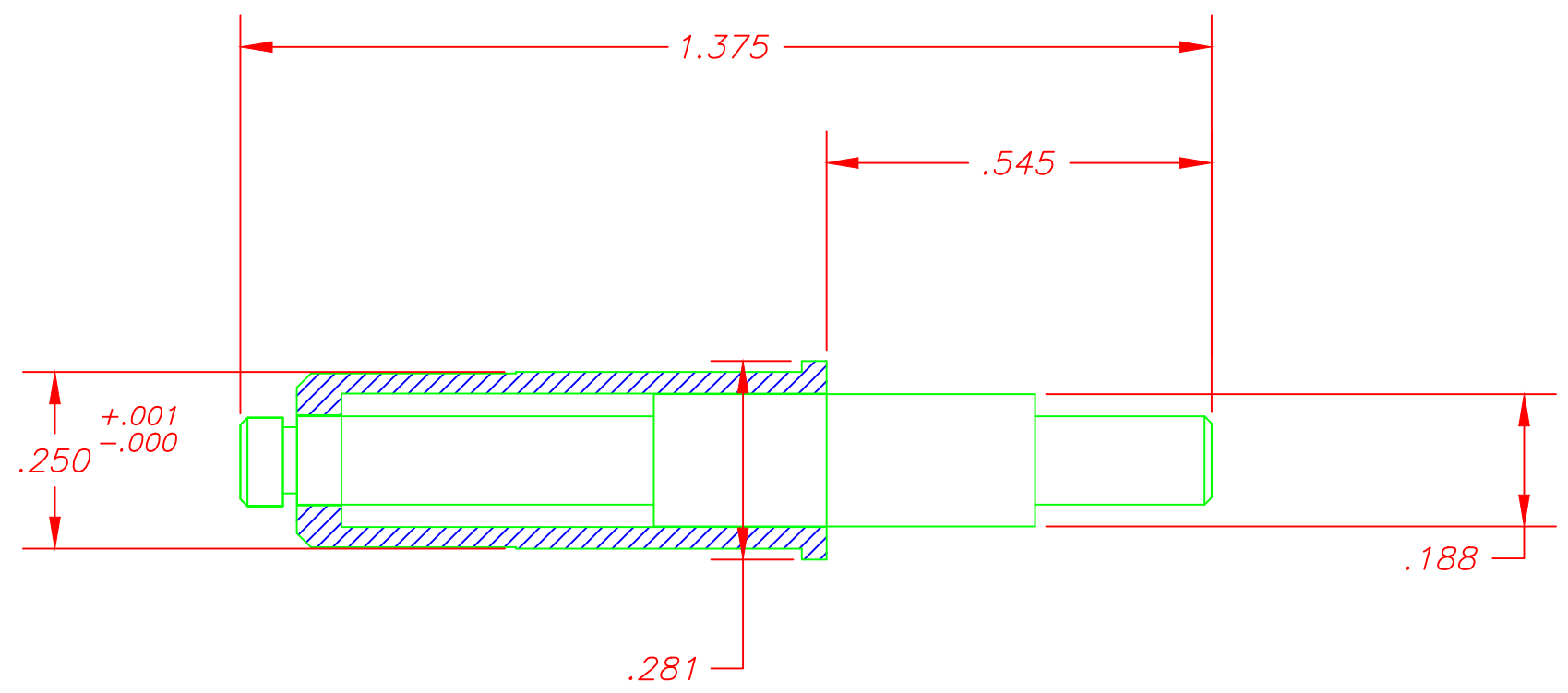
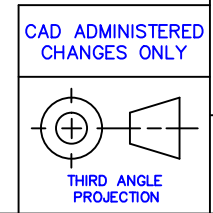


| P\N | MATERIAL | MATERIAL DESCRIPTION | FINISH | REMARKS |
|-----|----------|----------------------|--------|---------|
| | | | | |



RECOMMENDED DRILL HOLE SIZE = .2495 / .2500 DIA

SEMCO PROPRIETARY



| | | | | | | | | | | | | | | | |
|--|--|-------------------------------|--|--|--|----------------|--|---|--|---------------------------------------|--|---|--|------------------|--|
| AutoCAD | | CAD ADMINISTERED CHANGES ONLY | | INCHES .X ± .02 .XX ± .01 .XXX ± .005 FRACTIONAL = STOCK SIZE DE-BURR ALL EDGES .020 MAX. | | ANGULAR ±1° | | APPROVALS DESIGNED F.J. HOLMES 4/19/91 DRAWN M. DOWDALL 1/14/02 CHECKED RELEASED M. DOWDALL 1/14/02 | | DATE 4/19/91 1/14/02 1/14/02 | | SEMCO MACHINE CORPORATION 5 Kenneth Miner Drive Wrentham, MA. 02093 (508) 384-8303 | | | |
| TOLERANCES UNLESS OTHERWISE SPECIFIED. | | APPROVALS | | DATE | | REVISION | | BY DATE | | APVD | | SEMCO MACHINE CORPORATION CUSTOM SPRING LOADED TP .125/.188 DIA | | | |
| QTY | | ASSEMBLY NUMBER | | ECN | | REV. | | SCALE 4:1 | | DWG NO ASM-8766 | | SHEET 1 OF 1 | | REV. A | |