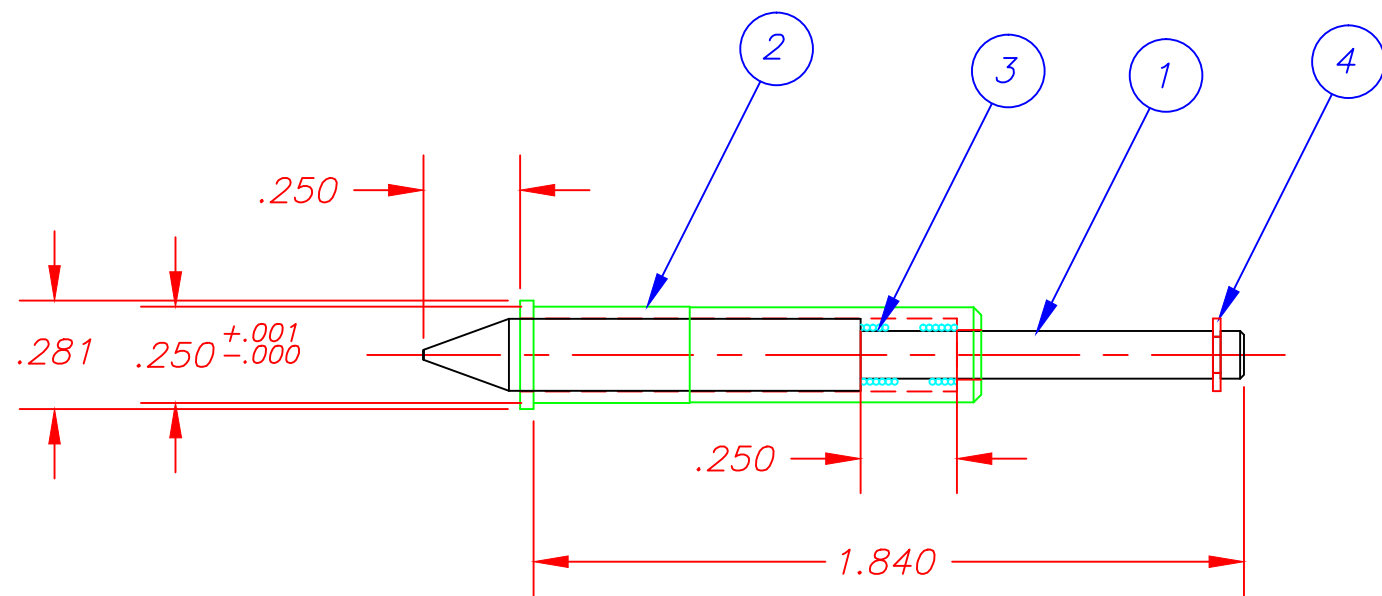
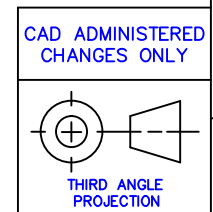


ITEM	PART Nos.	DESCRIPTION	QTY.
1	SC200-4133-01	PIN, TOOLING SPRING LOADED	1
2	SC200-4134-01	BARREL	1
3	P0063	SPRING, LC-018B-10MW	1
4	P0102-01	E-RING	1




RECOMMENDED DRILL HOLE SIZE=.2495/.2500

SEMCO PROPRIETARY



AutoCAD

CAD ADMINISTERED CHANGES ONLY

1	ASM-8581		A	FIRST ISSUE				
QTY	ASSEMBLY NUMBER	ECN	REV.	REVISION	BY	DATE	APVD	
TOLERANCES UNLESS OTHERWISE SPECIFIED.			APPROVALS	DATE	 SEMCO MACHINE CORPORATION 5 Kenneth Miner Drive Wrentham, MA. 02093 (508) 384-8303			
INCHES	ANGULAR	DESIGNED		TOOLING, PIN SPRING LOADED 2.125 LONG				
.X ± .02	± 1°	F.J. HOLMES						7/8/03
.XX ± .01		DRAWN						7/8/03
.XXX ± .005		CHECKED						
FRACTIONAL = STOCK SIZE			RELEASED	SCALE 2:1				
DE-BURR ALL EDGES .020 MAX.			M. DOWDALL					7/8/03
This drawing is the property of SEMCO CORPORATION. It is loaned with the understanding that it may not be reproduced nor may the information contained herein be used for the making of drawings or for manufacturing purposes without the written consent of SEMCO.					DWG NO	SHEET	REV.	
					ASM-8581	1 OF 1	A	