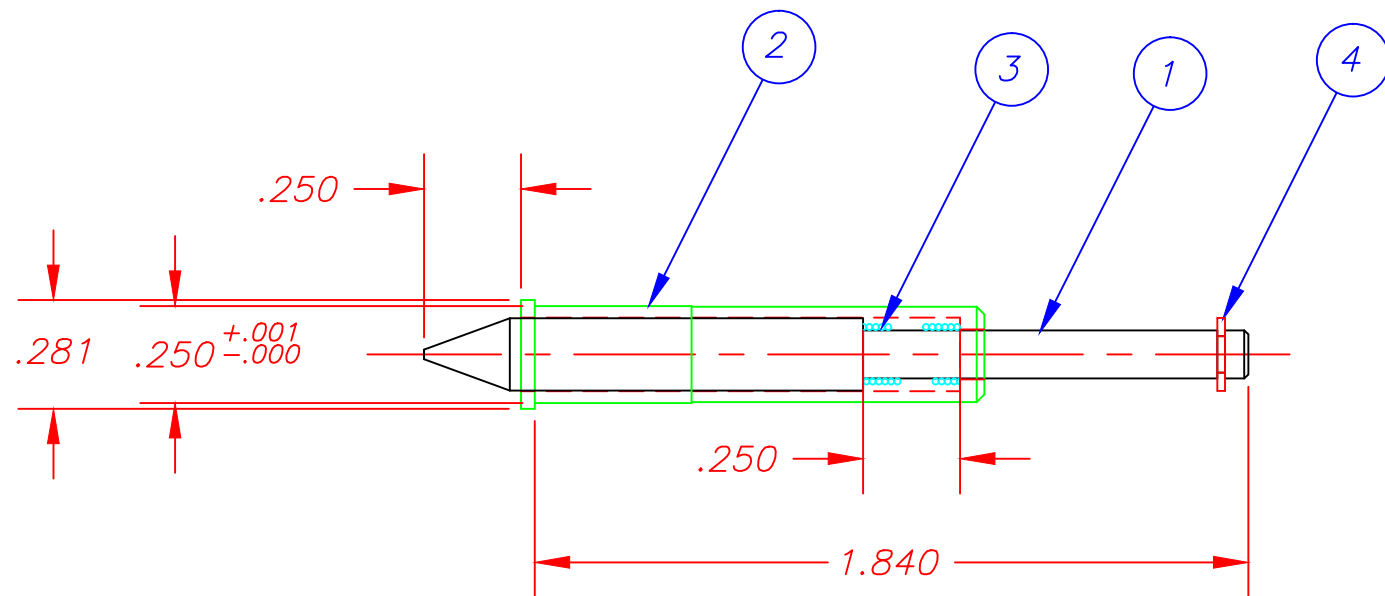



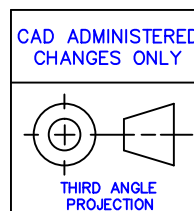
ITEM	PART Nos.	DESCRIPTION	QTY.
1	SC200-4133-01	PIN, TOOLING SPRING LOADED	1
2	SC200-4134-BRASS	BARREL	1
3	P0063	SPRING, LC-018B-10MW	1
4	P0102-01	E-RING	1



RECOMMENDED DRILL HOLE SIZE=.2495/.2500

QTY	ASSEMBLY NUMBER	ECN	REV.	DATE	REVISION	BY	DATE	APVD
1	ASM-8581		A	7/8/03	FIRST ISSUE			
TOLERANCES UNLESS OTHERWISE SPECIFIED.			APPROVALS	DATE				
INCHES		ANGULAR	DESIGNED	7/8/03	 <b>SEMCO MACHINE CORPORATION</b> 5 Kenneth Miner Drive Wrentham, MA. 02093 (508) 384-8303			
.X ± .02		±1°	F.J. HOLMES	7/8/03				
.XX ± .01			DRAWN	7/8/03				
.XXX ± .005			M. DOWDALL	7/8/03				
FRACTIONAL = STOCK SIZE			CHECKED					
DE-BURR ALL EDGES .020 MAX.			RELEASED	7/8/03				
			M. DOWDALL	7/8/03	<b>TOOLING, PIN SPRING LOADED</b> <b>2.125 LONG W/BRASS BARREL</b>			
AutoCAD				SCALE	DWG NO	SHEET	REV.	
CAD ADMINISTERED CHANGES ONLY				2:1	ASM-8581-BRASS	1 OF 1	A	

SEMCO PROPRIETARY



This drawing is the property of SEMCO CORPORATION. It is loaned with the understanding that it may not be reproduced nor may the information contained herein be used for the making of drawings or for manufacturing purposes without the written consent of SEMCO.